

Banquette BALI



Description

Assise en ciment hydrofugé (ciment certifié eco operando). Le ciment certifié eco operando émet 35% d'émissions de CO2 en moins que le ciment ordinaire. Agrégats siliceux.

Dimensions :

Longueur : 190 cm

Largeur : 51 cm

Hauteur : 47 cm

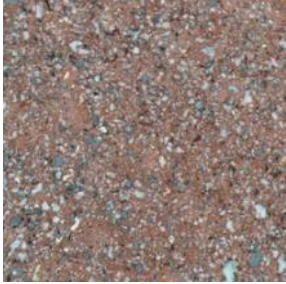
Poids:

456 kg

Les options

Autres coloris (nous consulter, augmentation en fonction de la couleur. *Demander un devis.*)

Couleurs de finition



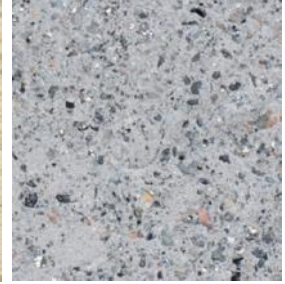
Marron



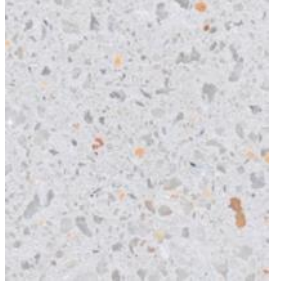
Noir



Ocre



Gris



Blanc

Finition de surface

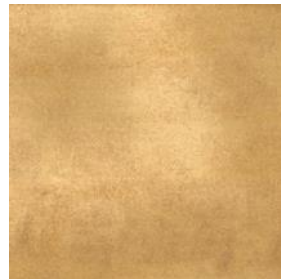
Revêtements composés de liants qui intègrent des charges de métal concassé et donnent aux éléments urbains l'apparence réelle du métal ainsi que son oxydation et ne se détériorent pas avec le temps.



Bronze



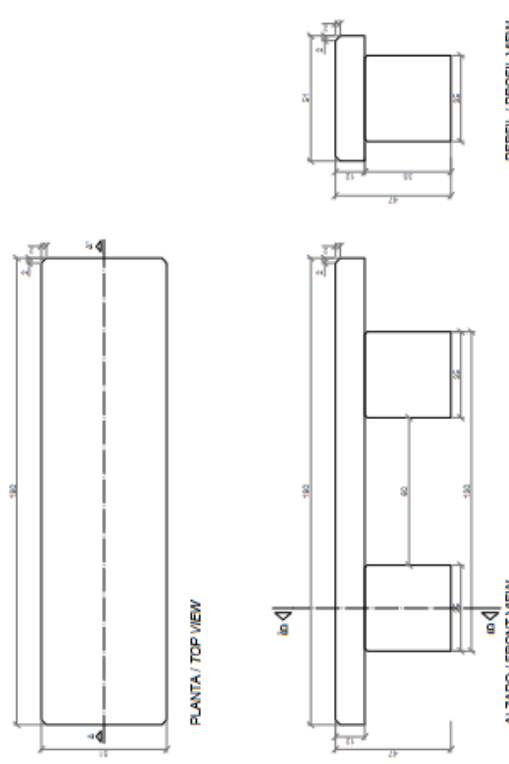
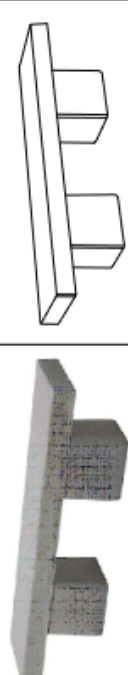
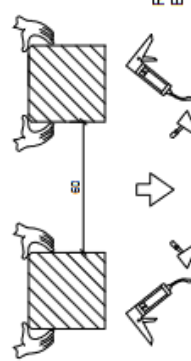
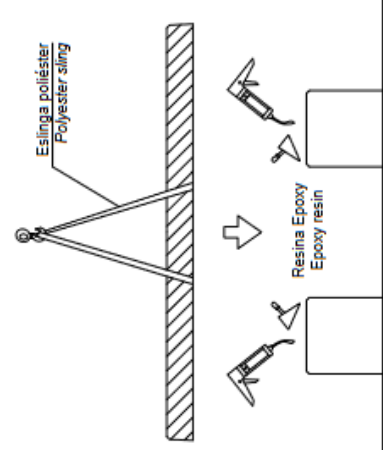
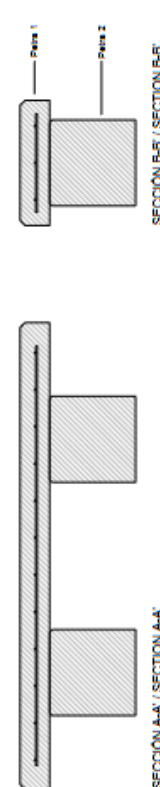
Corten



Golden



Noir graphite

<p>CARACTERÍSTICAS / FEATURES</p> <p>Material: hormigón Petra 1 + Petra 2 Acabado: decapado Dimensiones: l. 190, a. 51, h. 47 cm Color: ver carta de colores Fijación: mediante resina epoxy Peso: 485 Kg Pallet: 210 x 55 cm (1un) 210 x 55 cm (2un)</p> <p>Material: precast concrete Petra 1 + Petra 2 Finish: sealed Dimensions: l. 190, w. 51, h. 47 cm Colour: see colour catalogue Fixing: through epoxy resin Weight: 485 Kg Pallet: 210 x 55 cm (1un) 210 x 55 cm (2un)</p> <p>diseñador / design: magourban</p>	<p>GEOMETRIA / GEOMETRY</p>  <p>PLANTA / TOP VIEW</p> <p>ALZADO / FRONT VIEW</p> <p>PERFIL / PROFIL VIEW</p> <p>ESCALA / SCALE: 1/20</p>		<p>MANIPULACIÓN E INSTALACIÓN / HANDLING AND INSTALLATION</p> <p>1 Levantar los pies del banco y colocarlos en el lugar indicado. Lift the feet of the bench and place them in the indicated place.</p> <p>Elevación / Elevation P= 100 Kg</p>  <p>Resina Epoxy Epoxy resin</p> <p>2 Levantar el asiento con eslingas y apoyarlo en los pies del banco. Lift the seat with slings and rest it on the bench feet.</p> <p>Elevación / Elevation P= 256 Kg</p>  <p>Eslinga poliéster Polyester sling</p> <p>Resina Epoxy Epoxy resin</p>	<p>ESPECIFICACIONES / SPECIFICATIONS</p>  <p>SECCIÓN A-A' / SECTION A-A'</p> <p>SECCIÓN B-B' / SECTION B-B'</p> <p>ESCALA / SCALE: 1/20</p>
--	---	---	--	---