

## Assise PAUSA



### Description

Assise en ciment hydrofugé ( ciment certifié eco operando). Le ciment certifié eco operando émet 35% d'émissions de CO2 en moins que le ciment ordinaire. Agrégats marbre ou carrière concassée.

### Dimensions

Longueur : 270 cm

Largueur : 70 cm

Hauteur assise : 56 cm

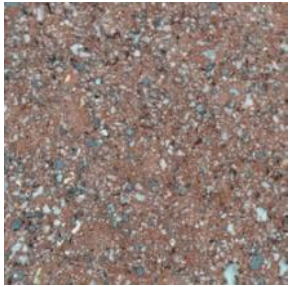
### Poids

940 kg

### Les options

Autres coloris (nous consulter, augmentation en fonction de la couleur. *Demander un devis.* )

## Couleurs de finition



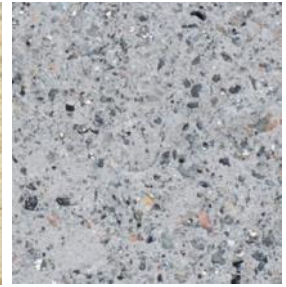
Marron



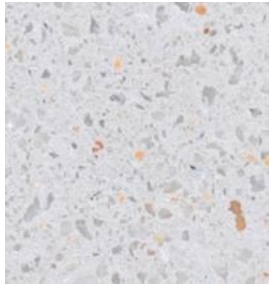
Noir



Ocre



Gris



Blanc

## Finition de surface

Revêtements composés de liants qui intègrent des charges de métal concassé et donnent aux éléments urbains l'apparence réelle du métal ainsi que son oxydation et ne se détériorent pas avec le temps.



Bronze



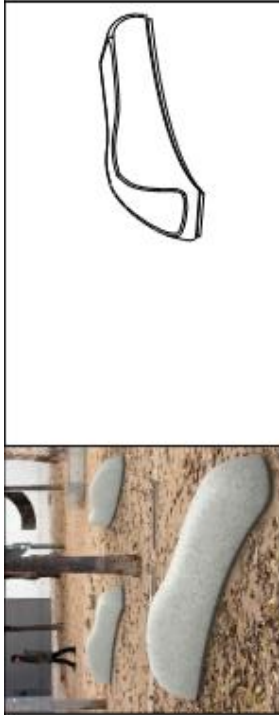
Corten



Golden



Noir graphite



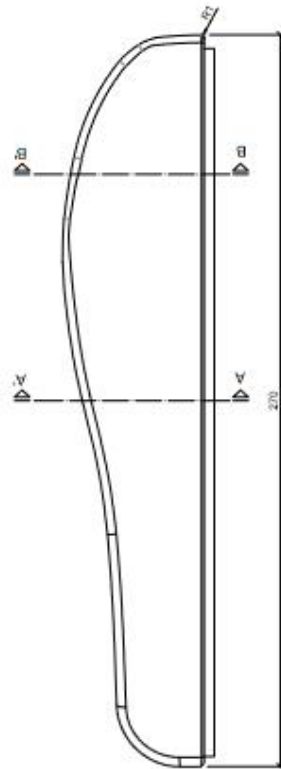
**CARACTERÍSTICAS / FEATURES**

Material hormigón petra 1  
Acabado decapado e hidrofugado  
Dimensiones l. 270, a. 70, h. 56 cm.  
Color ver carta de colores  
Fijación simplemente apoyado o mediante resina epoxy  
Peso 940 Kg  
Bulto 300 x 100 x 75 cm  
Peso bulto 960 Kg

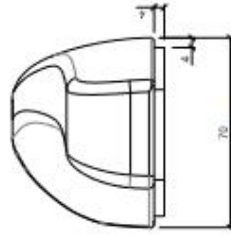
Material precast concrete petra 1  
Finish scaled and waterproofed  
Dimensions l. 270, w. 70, h. 56 cm  
Colour see colour catalogue  
Fixing resting on the ground or with resin epoxy  
Weight 940 Kg  
Package 300 x 100 x 75 cm  
Weight package 960 Kg

diseñador / design: Onof Guimerá

**GEOMETRIA / GEOMETRY**



ALZADO / PROFIL VIEW



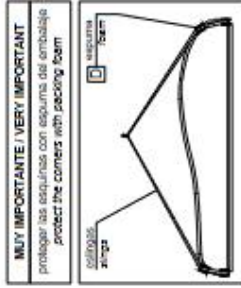
PERFIL / PROFIL VIEW

PLANTA / TOP VIEW



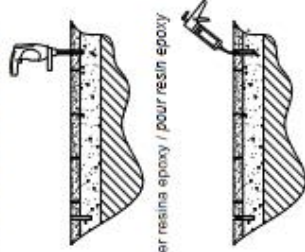
**MANIPULACIÓN E INSTALACIÓN / HANDLING AND INSTALLATION**

1 elevar y enrosacar la varilla / lift and thread the rod



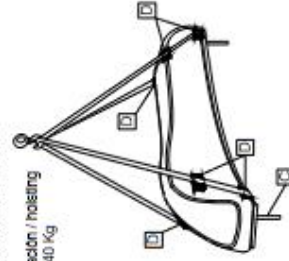
elevación / hoisting  
P= 940 Kg

2 perforar dos agujeros / drill 2 holes

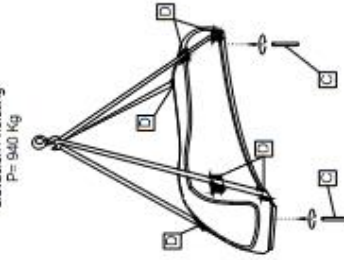


3 vender resina epoxy / pour resin epoxy

4 insertar la varilla en el agujero / insert metal rod in hole



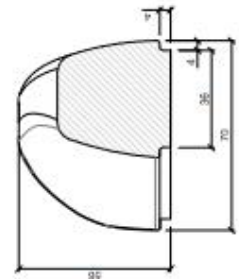
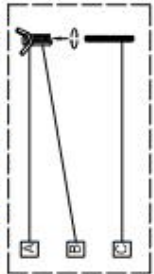
elevación / hoisting  
P= 940 Kg



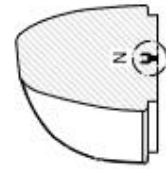
elevación / hoisting  
P= 940 Kg

**ESPECIFICACIONES / SPECIFICATIONS**

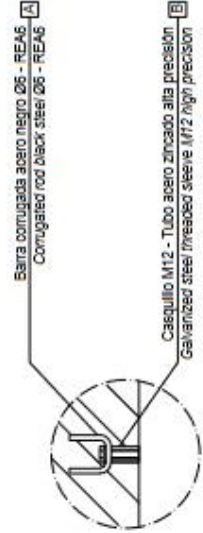
**SISTEMA DE FIJACIÓN / ANCHORAGE SYSTEM**



SECCIÓN A-A' / SECTION A-A'



SECCIÓN B-B' / SECTION B-B'



DETALLE N / DETAIL N