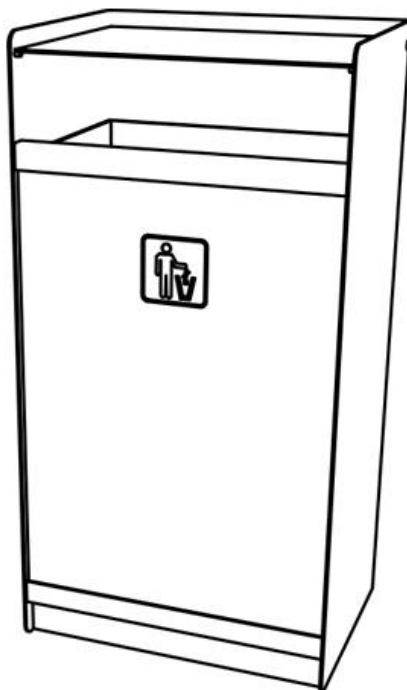


Corbeille MAG

Corbeille 120L



Description : Structure en acier galvanisé. L'habillage est en acier galvanisé. La corbeille dispose d'une protection. Le bac en polypropylène de 5 mm d'épaisseur est amovible.

Capacité

120 litres

Dimensions

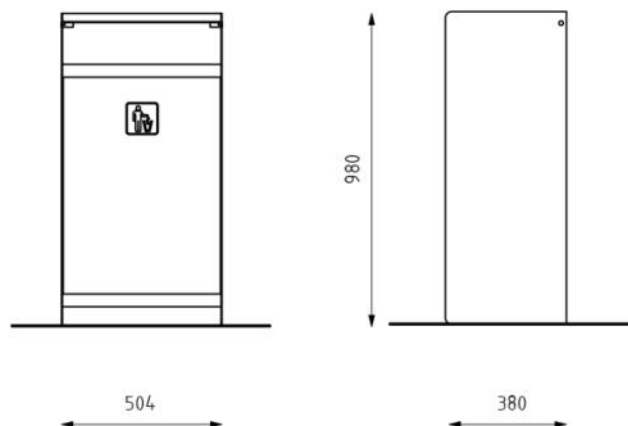
Hauteur : 980 mm

Largeur : 380 mm

Longueur : 504 mm

Coloris standards : RAL 7016 (gris anthracite), RAL 9005 (noir jet), RAL 9006 (aluminium blanc), RAL 9007 (aluminium gris).

Autres RAL en option avec plus-value.



METAL



RAL 7016



RAL 9005



RAL 9006



RAL 9007



ZINC



ACIER INOXYDABLE



ALUMINUM BRUT

BOIS



BOIS TROPICAL



PIN



EPICEA



ACACIA

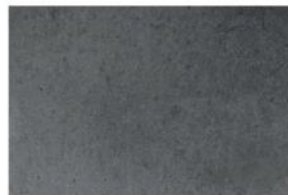


CHENE

BETON



BETON LISSE BRUT



BETON LISSE ANTHRACITE



BETON LISSE BRIQUE ROUGE



BETON BROSSE

VERRE



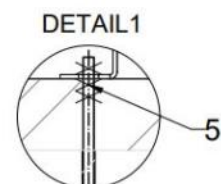
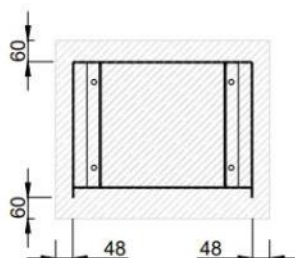
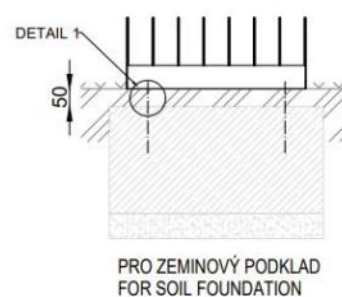
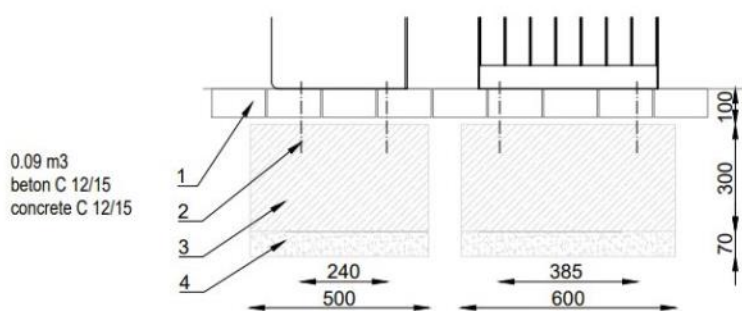
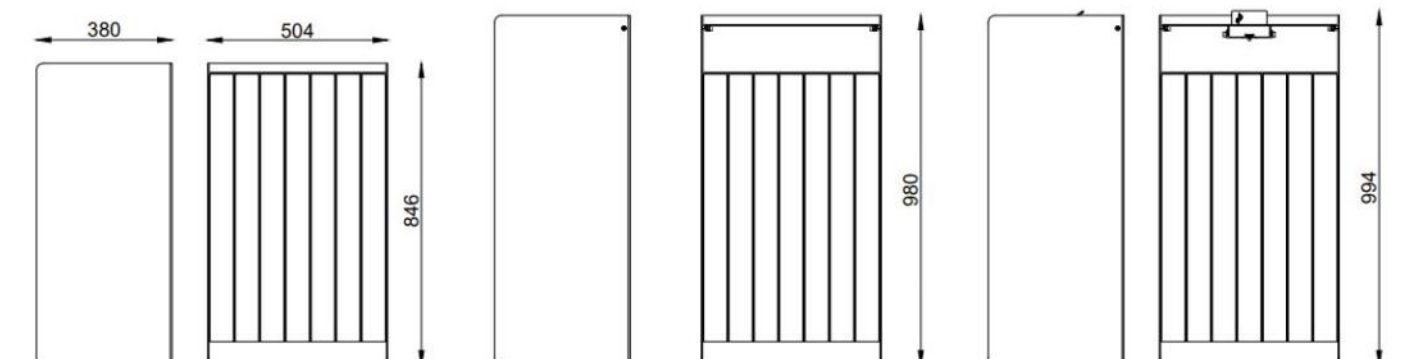
VERRE CLAIR



VERRE SATINE



POLYCARBONATE



LEGENDE :

- 1 Niveau sol 0
- 2 Tige d'ancrage M10
- 3 Massif béton
- 4 Fond de forme