

Appui vélo RUBIG

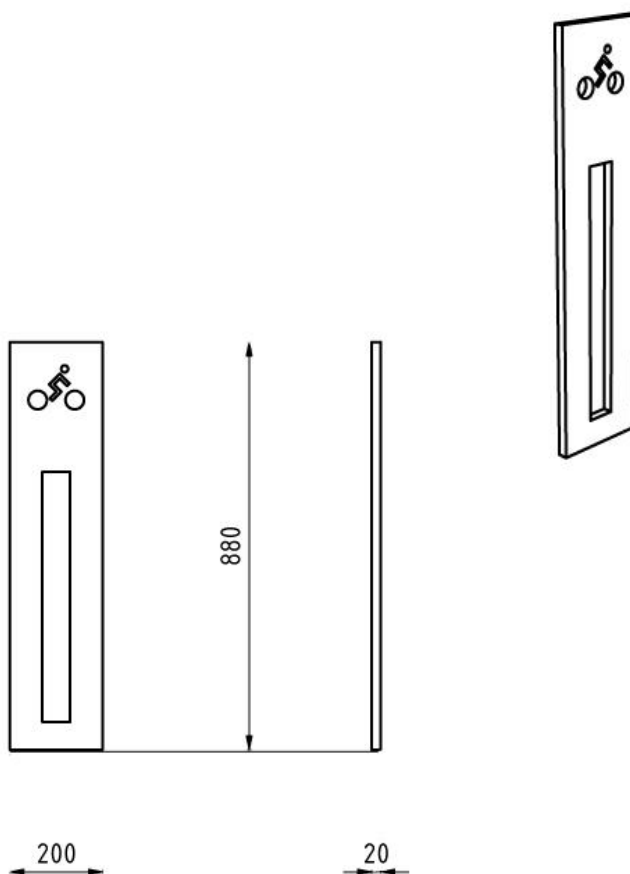


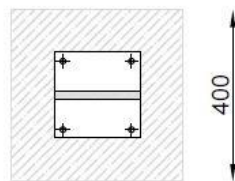
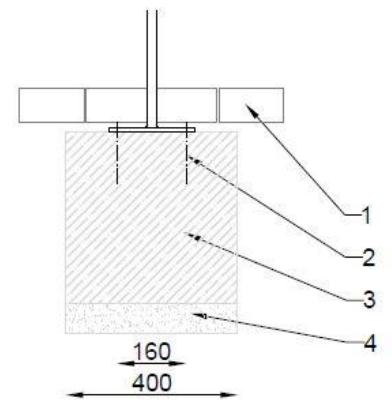
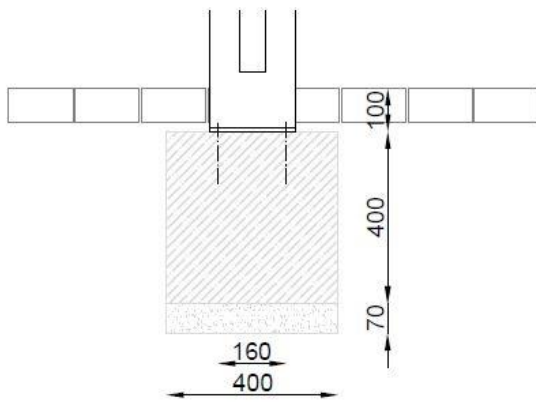
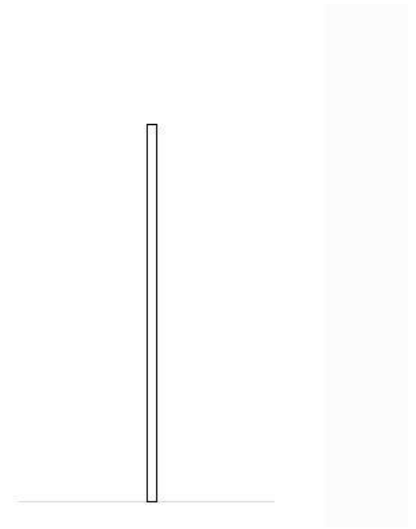
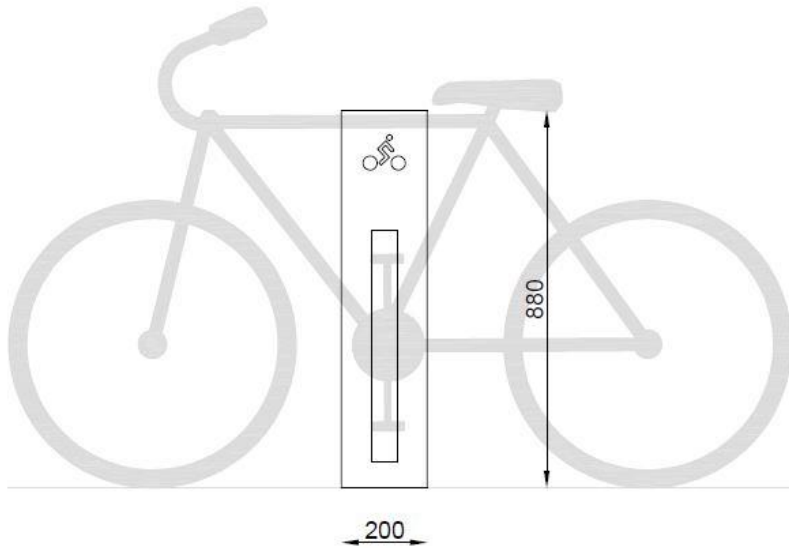
Description : La structure est faite en acier soudé thermolaqué. Fixation sur platines par tiges filetées M10.

Dimensions

Hauteur : 880 mm,
Largeur : 20 mm,
Longueur : 200 mm.
Poids : 28 kg.

Coloris standards : RAL 7016 (gris anthracite),
RAL 9005 (noir jet), RAL 9006 (aluminium
blanc), RAL 9007 (aluminium gris).





LEGENDE :

- 1 Niveau sol 0
- 2 Tige d'ancrage M10
- 3 Massif béton
- 4 Fond de forme